

## THERE ARE MANY WAYS TO SUPPORT THE ARTS.

Visiting violin soloists, ballet dancers, art instructors, and exhibit judges need places to stay in our area. Be a **Patron of the Arts** by hosting a distinguished visiting artist.



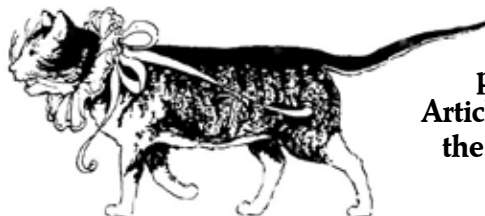
Another way to contribute is to donate bedding sheet and towel sets to our supply for Rams Head Rental houses.

Call Gualala Arts at (707)884-1138 if you'd like to host or contribute linens.

## OUT OF TOWN GUESTS? CHECK OUT VISITOR INFO

If you are hosting out of town guests, **Visitor Info** on **GualalaArts.org** could make planning their visit a little easier. This webpage lists **Lodging, Food near Gualala, Art Galleries** and **Info on the Arts**.

Help us keep this page current by letting the Gualala Arts office know if you spot needed updates. The **Info on the Arts** takes you to information about our local area as well as Mendocino and Sonoma County. The Arts Council of California site covers art events in all of California.



**Sketches is now published Monthly!**  
**Article Deadlines are always the first day of the month before the Issue.**

### Read Sketches in color online!

Accessible 24/7 at  
**GualalaArts.org**.  
Download a whole issue  
or just one page.

Email us at  
**info@GualalaArts.org**  
to be put on the  
**"Sketches do not mail list"**  
Save a tree!



Find the most current info about  
Gualala Arts Interest Groups on the website.  
**GualalaArts.org**

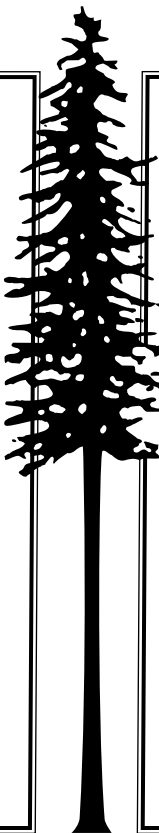
## BOARD OF DIRECTORS

**Rich Schimbor**, President  
**CE Brown**, Vice President  
**Sharon Nickodem**, Second Vice President  
**Steve Carnes**, Treasurer  
**Alan Grossman**, Secretary

**David 'Sus' Susalla**, Executive Director


**Board Members:** Phil Atkins, Dave Bower,  
Rosemary Campiformio, Teri Fagan, Karen  
Hay, Don Krieger, Lynda O'Brien, Richard  
Pfeifer, Sandy Scott

Promoting public interest and participation in  
the arts since 1961.



## SKETCHES

**Editor:** Gualala Arts Staff  
**Art Director:** P.T. Nunn  
**Mailing Staff:** Trudy Armer, Dick Balch,  
Marilyn Balch, Irma Brandt, Ann Graf, Nita  
Green, Sue Grenwelge, Bill Halderman, Sue  
Halderman, Suzanne Hansen, Colleen Jackman,  
Sharon Jones, Helen Klembeck, Lee Kosso, Don  
Omer, Deborah Parsons, Bobbie Penney, Karen  
Tracy

 Sketches is printed on recycled paper out  
of concern for the planet. Taking care of trees is  
a part of our job.

Copyright © 2013 Gualala Arts, Inc.