



FEBRUARY - MARCH 2012

# SKETCHES



The Music Man

YOUNG CREATIVE MINDS Head & Rush

Searching for the  
Historical Novel

ANNUAL  
MEMBERS  
MEETING

Small  
Works

The Long Shadow  
of Fossil Fuels

Kirkwood Ensemble

CYPRESS STRING  
QUARTET

MATZ &  
MORGAN

Fort Ross  
Bicentennial



**Opening Reception: Friday, February 3 at 5:00 p.m.**  
**Exhibit remains through February 26, 2012**

The Mendocino / Sonoma "Arts in the Schools" program represents over 600 students from Fort Ross, Kashia, Horicon, Arena, Point Arena High School, Home Study, Pacific Community Charter School and Manchester schools.

Each year, Gualala Arts features artwork created through-out the year in these local elementary and high schools. The students work is always fun to see and very creative. This is just one more way that Gualala Arts supports and promotes public interest and participation in the arts.

The February art show of student works will feature the creativity of grades pre-school through 12th grade.

Each of our local schools approach art in their own



unique way. Often it depends on the classroom teacher's talents and how they find ways to blend a creative project into the curriculum.

There are schools here on the coast that fortunately still have an art program where students spend part of each week in an art room.

This is a huge accomplishment considering budget cuts, even though research shows that art and creativity help children succeed in the core curriculum subjects.



Thankfully we live in a supportive community full of artists, some of whom even contribute a percentage of their sales to art in our schools. (THANK YOU!)

We invite everyone to come by and view the student art exhibit. There are always surprises and unexpected variations of traditional techniques. Come enjoy the visual treats.

Opening Reception: Friday, March 2, 5:00 p.m.  
Exhibit remains through April 1, 2012



# Small Works

"Good things come in small packages" applies to art as well as to jewelry. The Small Works Exhibit in March of 2012 hopes to provide some artistic gems. Any two or three dimensional piece in any medium can be submitted, provided it can fit in a twelve inch cube with frame and matting included.

This concept was first pioneered six years ago by the late Marilyn Lafferty, who curated the first Small Works Exhibit in February, 2006. Lafferty, the wife of sax player, Harrison Goldberg, also curated a number of other Gualala Arts shows including the 2006 Giri exhibit of Japanese art and culture.

Japanese Netsuke carvings are only one example of what would be appropriate for the upcoming event. A netsuke is a carved, button-like ornament worn on clothes usually made of wood or ivory that have become collector items.

Miniature portraits developed from illuminated manuscripts and flourished in Europe from the sixteenth century through the eighteenth until they were replaced by photographs. In 2004, the

Metropolitan Museum of Art in New York purchased an 11x8 inch painting for \$50 million dollars.

The three dimensional art of turned wood, carved stone, glass, woven baskets, gourds, decoupage box, and clay also could provide interesting and provocative entries. The smallest piece in the 2006 show was Suzanne Hansen's completely hand sewn beaded "Humming Bird" box.

Limiting the size of the piece provides a challenge to some artists by asking them to work on a small scale so they have to reduce the scope of big ideas and large creations. For others the appeal is the precision work and detail. Some find the size restriction forces them to think in new ways.

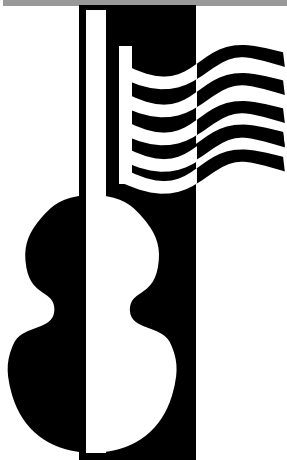
The real trick for any artist is to catch the eye of the viewer and to make an artistic statement within the size restriction. Organizer Bruce Jones, inspired by Lafferty's vision, anticipates this reprise exhibit will create as big a response as the original Small Works Exhibit did. The scale may be confined but there is no limit to the imaginative possibilities.

---

## EXHIBITION IN THE FOYER: William Heck, Jr., Photographer

William Heck's photography series, *Kashaya Portraits*, is part of the ongoing commemoration of the 200th anniversary of Fort Ross. The Kashaya were the first people known to have lived in the area that is now Fort Ross State Historic Park. Fifty years after his father, William Heck, Jr., has photographed the Kashaya, portraying a living, contemporary culture, as well as the remarkable legacy that is passed from generation to generation. The exhibition will feature the photographs of William Heck, Jr. and selected photographs by his father.





# Kirkwood Ensemble

Sunday, February 12, 2012

4:00 p.m.

Gualala Arts Center

Back by popular demand, we are pleased to welcome the Kirkwood Ensemble, which takes its name from the Music at Kirkwood Festival, where developing musicians learn from an outstanding faculty in a beautiful Sierra mountain setting.



**Dawn Harms** is active as a violinist, violist, chamber musician, and conductor. For ten years Dawn was first violinist with the Harrington String Quartet, winners of the Grand Prize at the prestigious Fischhoff and Evian International chamber music competitions. She played first violin for five years with

the Santa Fe Opera. A member of the San Francisco Opera Orchestra and the New Century Chamber Orchestra, Dawn also performs as co-concertmaster with the Oakland Symphony, Santa Fe Pro Musica Chamber Orchestra, and the Pacific Chamber Orchestra. Dawn is the founder and conductor of the Elixir Chamber Orchestra, and co-founder and music director of the Music at Kirkwood Chamber Music Festival. Ms. Harms currently serves on the faculty of Stanford University.

**Victoria Ehrlich**, cellist, received her musical education at Southern Methodist University in Dallas, the Academy of Santa Cecilia in Rome, Italy, and the State University of New York at Stony Brook, as well as summer programs at Interlochen, Aspen and



Tanglewood. Before joining the San Francisco Opera Orchestra in 1984, she performed with the Santa Fe Opera and Santa Fe Chamber Music Festival, and served as principal cellist with the Symphonies of Omaha, Richmond, VA, and Phoenix. Ms. Ehrlich has performed with the San Francisco Ballet and

Symphony, New Century Chamber Orchestra, and California and Berkeley Symphonies.



**Roxanne Michaelian**, pianist, began studies at the San Francisco Conservatory of Music and earned undergraduate and Masters' degrees in Piano Performance. Ms. Michaelian's first appearance as soloist with orchestra was at the age of 12 when she performed with the San Francisco Symphony in

its youth concert series. She subsequently received first prize in the North American Young Artists Competition in Denver and performed with the Denver Symphony. She was overall winner at the L.A. Young Musicians Foundation competition, resulting in her appearance as soloist with the L.A. Debut Orchestra at the Dorothy Chandler Pavilion. She also has played with the San Francisco and Oakland Symphonies, San Francisco Chamber Orchestra and Palo Alto Chamber Orchestra.

Tickets are \$25 advance; \$5 more day of concert (buy your tickets early!).  
Youth ages 7 through 17 are admitted free.

# The Music Man

Born in Mason City, Iowa, Meridith Willson learned to play the piccolo and the flute and became a soloist in John Phillip Sousa's band. So it is natural his creation, the flamboyant Harold Hill, River City, Iowa's shyster band promoter, teacher and leader, rings true to life.

*The Music Man* was Willson's first attempt at writing a musical. He began writing it in 1948 and spent nine years getting it right. All that effort really paid off! The show became a 1957 Broadway hit, winning five Tony Awards, including Best Musical and running for 1,375 performances. The cast recording of the show won the first Grammy Award for "Best Original Cast Album."

Directed by Lynn Atkins, musical direction by Don Krieger and choreography by Bryn Harris, *The Music Man* will be the latest musical performed by Art Center Theater and boasts of the largest cast ever mounted on its stage. Participating in Art Center Theater musicals is a family affair for many local performers.

The following cast and musician announcement is in alphabetical order:

Cathy Alexander - chorus, Remi Alexander-Vallejo - Miss Squire, Sierra Alexander - Zaneeta Shinn, Tony Ariola - Olin Brit, Phil Atkins - Ewart Dunlap, Madison Bell- chorus, Darla Buechner-chorus, Shayla Buechner - Amaryllis, Roxanne Claffin - chorus, Amanda Cole - chorus, Jeremy Crocket - Oliver Hix, Alethea Davies - Ethel Toffelmier, Rob

## GUALALA ARTS CENTER

FRI, FEBRUARY 24, 7:00 P.M.  
 SAT, FEBRUARY 25, 7:00 P.M.  
 SUN, FEBRUARY 26, 2:00 P.M. MATINÉE

FRI, MARCH 2, 7:00 P.M.  
 SAT, MARCH 3, 7:00 P.M.  
 SUN, MARCH 4, 2:00 P.M. MATINÉE



Diefenbach - Mayor Shinn, Cassy Grossman - chorus and percussionist, Leroy Gustafson - chorus, Dylan Freebairn-Smith - chorus, Ronna Frost - chorus, Liam Ignacio - Winthrop Paroo, Scott Ignacio - Charlie Cowell, Victoria Ignacio - chorus, Don Krieger - Constable Locke and keyboardist, Eric Kritz - woodwinds, Racehel Kritz - chorus, Laura Leigh - Eulalie Mackecknie Shinn, Gavin Malik - Tommy Djilas, Rachel Malik - chorus, Emmary Marshall-Mobert - Gracie Shinn, Claire McPherson - chorus, Sita Milchev - Mrs.Paroo, Denise Otterson - Maud Dunlap, Hannah Parsons - JaceyLocke, Sam Parsons - Harold Hill, Mary Lynn Preiss - Marian, Leif Rasmusen - chorus, Mike Turner - Marcellus Washburn, Sabina Walla - Alma Hix, Jaden Ward - chorus.

**Tickets are \$20 adults and \$10 youth (17 and under); \$5 additional if purchased the day of the performance.**

**More Info is always available on  
[GualalaArts.org](http://GualalaArts.org)**

# FORT ROSS



200 YEARS • 1812-2012

## THE MONTH OF MARCH

Gualala Arts presents **William Heick, Jr.**'s photography exhibit in the Foyer. Heick's photography series, *Kashaya Portraits*, is part of the ongoing commemoration of the 200th anniversary of Fort Ross. The Kashaya were the first people known to have lived in the area that is now Fort Ross State Historic Park.



# The Russians are coming! The Russians are coming! ... to the Gualala Arts Center

WEDNESDAY MARCH 7, 2012, 6:00 P.M.



Gualala Arts will host 'Dinner at Six' with special Russian fare to highlight the Russian presence on the Sonoma Coast. Presentations by Fort Ross staff and members of the Kashaya and Russian Community to highlight various aspects of Fort Ross Sonoma Historic Park. Contact Ben Klagenberg 785-3530 to get involved and attend the dinner.

THURSDAY, MARCH 8, 2012, 7:00 P.M.

## FORT ROSS 2012 BICENTENNIAL

WITH ROBIN JOY

Fort Ross In 1812, on a stretch of the Pacific Ocean eighty miles north of San Francisco, Russian explorers established Colony Ross, Russia's deepest vanguard into North America. Colony Ross was settled to establish trade relations with the Spanish in California, produce food to support the Russian settlements in Alaska, as well as to expand the valuable sea otter trade.

Although the Russian American Company stayed for just three decades, their contributions to early California society were vast - they built California's first ships and windmills, introduced glass-paneled windows, created the first brickyard, catalogued the local flora and fauna, completed detailed maps and were, by today's standards, among California's earliest entrepreneurs. Fort Ross is an excellent example of the best of California and what it has to offer the world: a

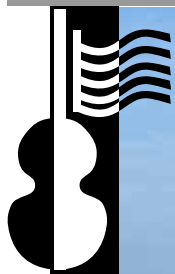


rich history, diverse cultural legacy, beautiful nature and dedicated people.

Robin Joy, Park Interpretive Specialist and Bicentennial Chair of Fort Ross State Historic Park, will discuss the events and programs of 2012 as well as present basic history of Fort Ross and Russian American history of the Sonoma coast.

For more information, visit **GualalaArts.org**.

**\$5  
Admission**



# Cypress String Quartet

Sunday, March 18, 2012, 4:00 p.m.  
The Gualala Arts Center

Tickets are \$25 advance;  
\$5 more day of concert.  
Buy your tickets early!

Ages 7 through 17 are admitted free.

Known for its elegant performances, the Cypress String Quartet's sound has been called "beautifully proportioned and powerful" by The Washington Post, and the ensemble has been singled out by Chamber Music Magazine as "a Generation X ensemble to watch."

The Cypress (Cecily Ward, violin; Tom Stone, violin; Ethan Filner, viola; and Jennifer Kloetzel, cello) formed in 1996 in San Francisco and during its first rehearsals together created a now-signature sound . . . Built up from the bottom register of the quartet and layered like a pyramid, the resulting sound is clear and transparent, allowing the texture of the music to be discerned immediately.

The Cypress String Quartet's unusual approach to their career is influenced by their fierce dedication to the ensemble. From the beginning, the foursome

made a commitment to each other to perform only as a quartet (meaning that they would not take on teaching or freelance jobs as orchestral members or with other chamber ensembles). They realized early on that they needed to create their own performance opportunities and organized as a non-profit - the Cypress Performing Arts Association.

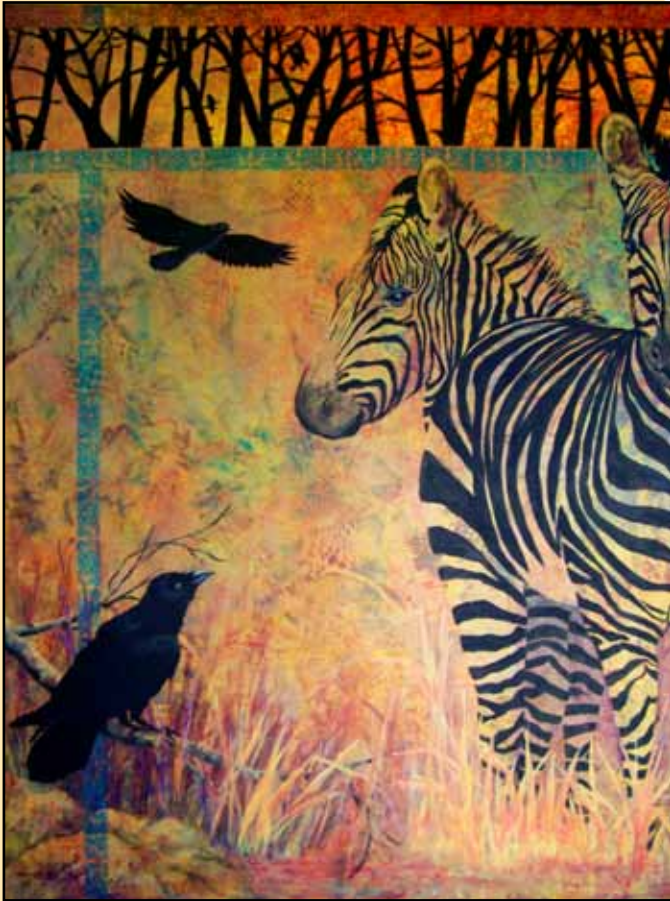
Now, on top of a busy schedule of more than 90 concerts each year at venues across the U.S. and internationally, including major concert halls and series such as the Kennedy Center, Library of Congress, Stanford Lively Arts, Krannert Center and Ravinia Festival, the Cypress String Quartet is a vibrant member of the San Francisco arts community and is dedicated to reflecting and enriching the city's cultural landscape.

**More Info is always available on  
GualalaArts.org**

# February

## JANE HEAD, PAINTINGS & WALT RUSH, JEWELRY

Opening Reception:  
Saturday, February 4, 2012, 5:00 p.m.  
Exhibit remains through February 29



Jane Head's current work of acrylic glazes on Venetian plaster focuses on the concept of extinction. She studied marbling and wood graining techniques under English master William Holgate.



Walt Rush's original creations and imaginative reworking of family jewelry pieces have delighted local patrons for many years. A self-taught silver and goldsmith, Rush has designed commissioned pieces and done custom work for over thirty years.

DOLPHIN GALLERY  
39225 Highway One  
Gualala, CA  
(707) 884-3896

# march

## CONNIE MATZ, OIL PAINTINGS & NANCY MORGAN, CERAMICS

Opening Reception:  
Saturday, March 3, 2012, 5:00 p.m.  
Exhibit remains through April 4

For Nancy Morgan, pottery combines both artistic expression and functionality. Morgan traces her love of clay back to playing with it along the banks of the Napa River. She lives in Healdsburg where her work is available at The Three Dog Pottery.



Connie Matz's respect for nature and her enjoyment of the artistic process are apparent in her oil paintings. Matz prefers oils for the intense, pure colors and its capacity to create fluid but controlled lines. More of Matz's work can viewed at [www.conniematz.com](http://www.conniematz.com)



DOLPHIN GALLERY  
39225 Highway One  
Gualala, CA  
(707) 884-3896

# THE LONG SHADOW OF FOSSIL FUELS

WITH KAY MARTIN

Thursday, February 9, 2012, 7:00 p.m.  
Admission is \$5

The Keystone XL pipeline debate is just the latest plan to sustain fossil fuel consumption, a fuel source everyone knows is being rapidly depleted. In her Thursday, February 9, talk, "The Long Shadow of Fossil Fuels," at Gualala Arts Center, Dr. Kay Martin will discuss the potential of geothermal, solar, wind and biomass alternatives in a scientific and objective manner based on her long career in the field of renewable energy development.

For over a generation, American presidents have pledged to break our country's dependence on oil, generally seen as a source for geopolitical unrest, climate change and social inequities around the world. But Americans continue the addiction and continue to downplay the alternatives.

Many recent developments have exacerbated the problem. In recent years, this country has fallen behind countries like Germany and even China in the search for alternate fuel sources. Also, the dramatic rise in the price of oil and the unrest in oil producing nations have changed the equation. The use of coal and natural gas present additional concerns.

In her timely presentation, Martin will focus on

the commercial readiness of renewable energy technologies and will analyze the major economic and political impediments that have thwarted deployment of these technologies. She will also discuss future trends in power production and transportation. She will advocate for community-based initiatives that may offer the best hope.



Martin has extensive background that qualifies her to talk on this topic. Since 2004 she has served as Vice-President of the BioEnergy Producers Association. She also sits on the Executive Board of the California Biomass Collaborative, a group exploring renewable energy from living organisms.

From 1987 to 2004 she was Director of the Environmental and Energy Resources Department for Ventura County. She has authored several books and frequently contributes articles on this subject in a variety of professional journals.

This talk provides an excellent opportunity to become better informed on a subject that affects everyone who lives on this planet. A \$5 admission will be collected at the door. The talk starts at 7:00 p.m. and there will be time to answer audience questions.

GUALALA ARTS  
**Book Club**  
For information, go to [GualalaArts.org](http://GualalaArts.org)

February:  
"Tinkers" by Paul Harding

## **Reader's Theater:**

Tuesday February 7, 2012  
in the Conference Room at the Gualala Arts Center.

"Bashert" by Caryn Huberman.

**Huberman will attend to introduce her play.**

"Wings of Doves", by Robert Anderson.

New listeners are welcome.

For info, call Mary Sue Ittner: 884-4824

# SEARCHING FOR THE HISTORICAL NOVEL

WITH LINDA LAMBERT

Thursday, March 15, 2012, 7:00 p.m.  
Admission is \$5



After a successful career as an educator, international consultant, and author of books on leadership, Linda Lambert ventured into the field of historical fiction. In her Thursday, March 15 presentation, entitled *Searching for the Historical Novel*, she proposes to offer the listener an opportunity to delve into the creative process behind the story.

Using examples from her research in Egypt, Italy and Taos, New Mexico that provided the material used in a trilogy of historical novels, Lambert will discuss the framework for historical research and the incorporation of culture, religion and politics into themes. She will also discuss the challenges of the process of writing fiction including the development of character and plot in a historical context.

*Cairo Diary: An Egyptian Fable* is her first novel, but she has written extensively on leadership issues. Her books include *Women's Ways of Learning*, *Leadership Capacity for Lasting Improvement*, *Building Leadership Capacity for School Improvement*, and *The Constructivist Leader*.

Her work in educational leadership models led her to become an international consultant who lived full-time

in Egypt from 1989 to 1991 and returned six times for additional assignments.

She draws on these experiences to weave her Egyptian fable that spans two millennia when the protagonist Justine Jenner uncovers the diary of the Virgin Mary written while in exile in Egypt. Later Lambert returned to assist in the development of a community school for girls.

Now residing at The Sea Ranch with her husband Morgan, Dr. Lambert is Professor Emeritus at California State University, East Bay. She has also been a probation officer, social worker, secondary school teacher and administrator as well as a consultant in the business and educational fields.

This presentation should interest not only the aspiring writer but also anyone who has picked up a book of historical fiction and wondered how it was constructed. There will be an opportunity for questions after the talk.



2012

## Annual Members & Board of Directors Meeting

Wednesday, February 15, 2012, 2:00 p.m.  
at the Gualala Arts Center

### **The annual meeting of Gualala Arts is open to all members of Gualala Arts.**

It is time to appoint officers and elect new board members for the upcoming year. Finance reports will be presented for 2011 as well as the budget for 2012. It is also an opportunity for members to reflect on the accomplishments of those who have fulfilled their term of office and to show their appreciation by their attendance. Refreshments will be served and there will be plenty of time for discussion with current board members and officers of Gualala Arts.

Of the fourteen board members, six will leave in February. Each departing director brought some special talent to enhance Gualala Arts and make it a special organization in our community. Hopefully, their example of service will prompt others in the future to build on their accomplishment.

---

**Betsi Carey** is one of the guiding lights behind the Culinary Arts program, helping to build its membership. She worked diligently on fund raising events such as Art in the Redwoods BBQ and the New York New Year's Eve celebrations just to name a few. She was also the chair of Gualala Arts membership committee.

**Russ Hardy** focused on building a strong donor base for an endowment that would insure financial stability regardless of economic vagaries. The Donor Grove is a way that we recognize these financial angels. He and his wife Judy sponsor The May Show, a juried event growing in importance. His fishing watercolors brought a fresh perspective to the local art scene.

**Helen Klembeck** is leaving the board but will still be involved with the Dolphin Gallery. Helen recently has devoted time and talent to tastefully remodeling the space for revolving exhibits so the work of local artists could be more attractively displayed. She will also continue to coordinate these revolving monthly exhibits as she has since 2001. Helen has handed off the reins of managing the rest of Dolphin Gallery to the capable hands of Carol Chell. Helen also sat on the Executive Committee as 2nd vice president as well as many other volunteer committees.

**Michele Marshall** served twice as President of Gualala Arts. She spearheaded the successful campaign to build an elevator so all might have full access to the facility. The project raised over \$100,000, came in on time and below budget. Michele also was the overall fundraising chair for several years and will continue on into the future heading up several fundraising events. She also used her facilitating skills to hold a 50-50 retreat on creating a vision to make the next fifty years as successful as the past fifty.

**Bill Retzer** brought his considerable business skills to the Finance Committee. He illustrates the role of board members to supervise the overall well-being of Gualala Arts and to maintain for future generations the facility and institution created by so many others who shared their talents in the same generous way these individuals have.

**Martha Wohlken**, in her inimitable and scintillating style, took the Top Hat evenings to a new level. She also used her social skills to advise the committee planning weddings. Martha also served as the Secretary on the Executive Committee.

## ANNUAL MEMBERS MEETING

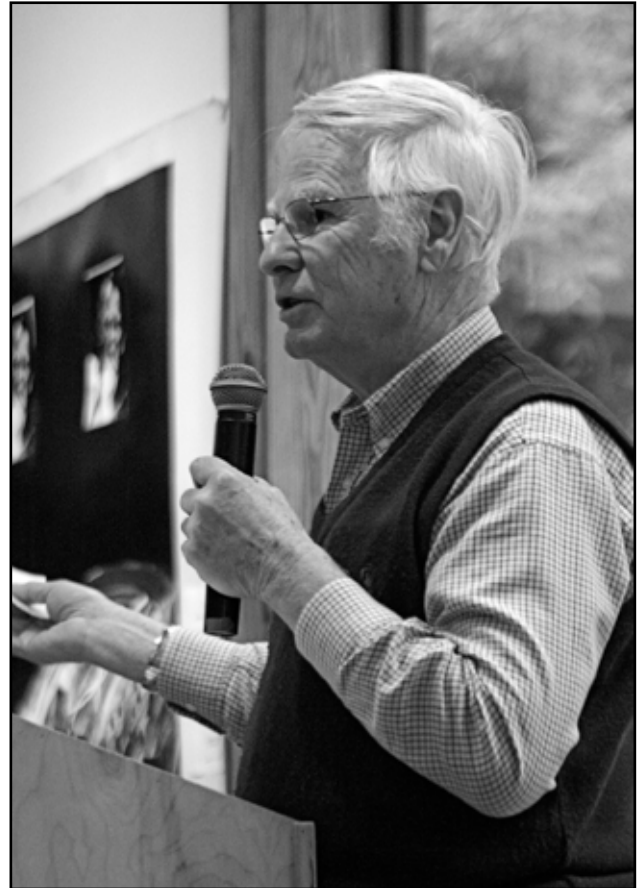
Proposed new board members are **Paddy Batchelder, CE Brown, Teri Fagen, Rich Fessler, Don Krieger and Sandy Scott**; nominations from the floor may be made prior to balloting. **Phil Atkins, Dave Bower, Steve Carnes, Barbara Dunsmoor, Alan Grossman, Mike Mee, Sharon Nickodem, and Richard Schimbor** all remain on the board.

The proposed slate of officers for 2012 is:

- **Dave Bower, President**
- **Richard Schimbor, 1st Vice President**
- **Sharon Nickodem, 2nd Vice President**
- **Steve Carnes, Treasurer**
- **Paddy Batchelder, Secretary**

If the health of any organization is judged by the participation of its members, these individuals speak volumes about why Gualala Arts is thriving. With the aid of others like them its future is ensured.

**More Info is always available on  
[GualalaArts.org](http://GualalaArts.org)**



Dave Bower, President of the Board of Directors



# THANK YOU

Gualala Arts wouldn't have received the generous Annual Fund donations without the help of the people who stuffed, labeled and mailed out the letters and forms.

A special thank you goes out to the volunteers that made this drive a success:  
**Trudy Arner, Marilyn and Dick Balch, Don Omer, Helen Klembeck, Harriet Wright, Sharon Jones and the Aerobics Ladies – Colleen Casey and Ann Little.**

Experience a rare and intimate concert  
to celebrate Earth Day

# KRONOS QUARTET

Sunday, April 22, 2012 at 7:00 p.m.  
at the Gualala Arts Center

# READY TO MAKE A PROPOSAL?

The time is approaching very quickly to turn in art exhibit proposals for 2013! Proposals must be received in the Gualala Arts office by March 31 and artists will be notified by April 30 whether or not their proposal has been accepted.

If you have always been curious about what it takes

to have an art exhibit at Gualala Arts in the Burnett Gallery or the Jacob Foyer, you will find most of the information you need to develop your proposal online at <http://gualalaarts.org/Exhibits/Proposal.html>. Also, a reminder to any group that has a "yearly" exhibit...they still need to input a proposal each year. Please feel free to contact Sharon Nickodem (Exhibit Committee Chair 707-884-9611) if you have any questions after reviewing the online materials.

## Baker Found!

**Arna Means** is our new Baker for the dedicated, hard working and hungry Gualala Arts Maintenance Crew.

Thank you Arna!

- \* Articles for the April/May issue of Sketches are due March 1, 2012.
- \* Current info about all Gualala Arts Interest Groups is on the website. Check for phone numbers and meeting schedules.  
**GualalaArts.org**

## SKETCHES IS NOW IN COLOR!

The online version of Sketches is now in color! Read it online 24/7 at **GualalaArts.org**. You can also download a copy to read or print later offline.

Don't need your mailed, paper copy of Sketches? Save a tree by asking to be put on the "**Sketches do not mail list.**" Let Karen at **info@GualalaArts** know the primary name for your membership.

- \* Volunteers are always welcome. Call 884-1138. Make a difference!


## BOARD OF DIRECTORS

**Dave Bower**, President  
**Michele Marshall**, Vice President  
**Rich Schimbor**, Second Vice President  
**Steve Carnes**, Treasurer  
**Martha Wohlken**, Secretary  
**David 'Sus' Susalla**, Executive Director  
**Board Members:** Phil Atkins, Betsi Carey, Barbara Dunsmoor, Alan Grossman, Helen Klembeck, Mike Mee, Sharon Nickodem, Bill Retzer

Promoting public interest and participation in the arts since 1961.

## SKETCHES

**Editor:** Gualala Arts Staff  
**Art Director:** PT. Nunn  
**Copy Editor:** Dave Jordan  
**Mailing Staff:** Suzanne Hansen, Don Omer, Sharon Jones, Bobbie Penney, Diane Cunningham, Marilyn Balch, Trudy Armer, Sue Grenwelge, Helen Klembeck, Sonja Thiene, Colleen Jackman, Nita Green, Bill Halderman, Sue Halderman, and Debra Parsons

 Sketches is printed on recycled paper out of concern for the planet. Taking care of trees is a part of our job.

Copyright © 2012 Gualala Arts, Inc.





## Gualala Arts is planning a season of programming for our entire community!

As the ball dropped in Times Square, Gualala Arts Center's Coleman Auditorium was the place to be to welcome in 2012 and conclude our yearlong celebration of Art in the Redwoods!



As we ease into another year here on the coast, your Arts Center is bustling with activity. Art Center Theater is running full steam ahead with rehearsals just about every day of the week, with well over 50 people creating the magic of theater for *The Music Man*. Ages spanning seven decades will grace our stage for a true family event.

Our Chamber Music series kicked off the year with the annual RC and Tina Vasavada concert by flautist Eugenia Zukerman. We look forward to another excellent season of world-class chamber music.



The Russians are coming to the Gualala Arts Center! We will saturate ourselves in Russian culture by participating in the bicentennial commemoration of the establishment of Fort Ross, the southernmost settlement of the Russian American Company in

North America. Planning is well underway for a lecture, dinner, art exhibit and theater event.



Many opportunities are available for our local artists in workshops, gallery exhibits and festivals for all ranges in ability, from our youth summer art camp to high-end juried art exhibits.

Gualala Arts is delighted to welcome back KRONOS Quartet to perform a rare, intimate concert on Earth Day – Sunday, April 22. In 2011, Kronos became the



only recipients of both the Polar Music Prize and the Avery Fisher Prize, two of the most prestigious awards given to musicians.

That is just the start of a long list of wonderful programming planned for 2012 -- from local community theater to wide ranging visual art opportunities, broad educational experiences through lectures and classes, to bringing world cultural experiences to our redwoods, to engaging one of the most celebrated and influential string quartets of our time in honor of Earth Day.

Of course, this wouldn't be possible without the support of you, our faithful members, creative artists, generous financial patrons, hardworking volunteers, dedicated staff and supportive community.

Cheers to a great year of diverse programming!

David 'Sus' Susalla  
Executive Director  
Gualala Arts, Inc.

More info is always available on [GualalaArts.org](http://GualalaArts.org)

---

### CALENDAR OF EVENTS IN FEBRUARY

Friday	3-	Exhibit	Opening reception: Arts in the Schools
Saturday	4-	Exhibit	Dolphin Gallery opening reception: Head & Rush
Thursday	9	Lecture	<i>The Long Shadow of Fossil Fuels</i> with Kay Martin
Sunday	12	Concert	Chamber Music: Kirkwood Ensemble
Wednesday	15	Meeting	Annual Membership Meeting
Fri - Sun	24-26	Musical	<i>The Music Man</i> by Meredith Willson

---

### CALENDAR OF EVENTS IN MARCH

Friday	2-	Exhibit	Opening reception: <i>Small Works</i>
Friday	2-	Exhibit	<i>Kashaya Portraits</i> by William Heick, Jr.
Fri - Sun	2-4	Musical	<i>The Music Man</i> by Meredith Willson
Saturday	3-	Exhibit	Dolphin Gallery opening reception: Matz & Morgan
Wednesday	7	Dinner	Dinner at Six: Russian fare
Thursday	8	Lecture	Fort Ross 2012 Bicentennial
Saturday	10	Auction	"Be Our Guest" - RCMS fundraiser
Thursday	15	Lecture	<i>Searching for the Historical Novel</i> with Linda Lambert
Sunday	18	Concert	Chamber Music: Cypress Quartet
Saturday	24	Burlesque	<i>Darlinda, Just Darlinda</i>

---

Gualala Arts Center is open 9:00 a.m. - 4:00 p.m. weekdays, 12:00 noon - 4:00 p.m. weekends



46501 Gualala Road  
P.O. Box 244  
Gualala, Ca 95445

(707) 884-1138  
[info@GualalaArts.org](mailto:info@GualalaArts.org)  
[www.GualalaArts.org](http://www.GualalaArts.org)

U.S. Post Paid  
Nonprofit Org.  
Permit #1  
Gualala, CA  
95445