

A Special Workshop



Watercolor
Energies and Composition

September 21 - 25

with instructor
Frank Webb

Workshops make thoughtful gifts for holidays and birthdays!

Plus
What's being planned for 2010



Gualala Arts

Workshops

August 2009 Issue
and Call to Artist on back cover



Gualala Arts offers a full array of workshops plus ongoing classes and studios throughout the year. Please check our website, GualalaArts.org, for the most current information.

For the majority of our workshops, you have contact access to the instructor so that you can get your questions answered directly. Many of the workshops have materials you will purchase directly from the instructor. Registration is through Gualala Arts.

Our workshops instructors are most often suggested by members who have taken classes in other locations. We try to offer workshops that will fulfill students who are just starting to more advanced students wishing to hone their skills or experiment in a new media.

Please feel free to suggest an instructor you feel would work well in our program. Specific information is available on our website or you can call Gerda Randolph at 785-2206.

Joy of Alla Prima:

Painting Landscapes in Nature

Instructors: Brigitte Curt & Jim Smyth

Introduction meeting, Friday, August 28, 2009, 5:30 - 8:30 p.m.

Classes

Saturday - Monday

August 29 - 31, 2009

9:30 a.m. - 5:30 p.m.

Register by: August 19, 2009

Tuition: Friday plus 2 classes:

\$250 members, \$275 non-members

Friday plus 3 classes:

\$350 members, \$385 non-members

Materials list: Contact instructors

Prerequisites: You should have some practice in oil painting or whatever medium you choose.

More information at GualalaArts.org



Creating Household Shrines

Instructors: Jan Maria Chiappa and Sharon Nickodem

Introduction: Saturday September 5, 2009

Open workshops (your choice) Saturdays/Sundays

September 6, 12, 13, 19, 20, 26

Times: 1:00 - 4:00 p.m.

Register by: August 22, 2009

Tuition: \$50 members; \$65 non-members (for complete series)

Materials fee: Varies. Approx. \$10 - \$25 per session

Materials list: Household Shrines materials list

This series of workshops calls artists to create shrines and altars. These workshops are offered in anticipation of the Arts Center's celebration of "Day of the Dead" with its November 1 festival. The shrines created during this workshop may be shown at the Household Shrines - Sacred Spaces in Everyday Life exhibit running from October 10 through November 8.

The Value of Value

Instructor: Cathryn Zeleny

Thursday, September 17, 2009

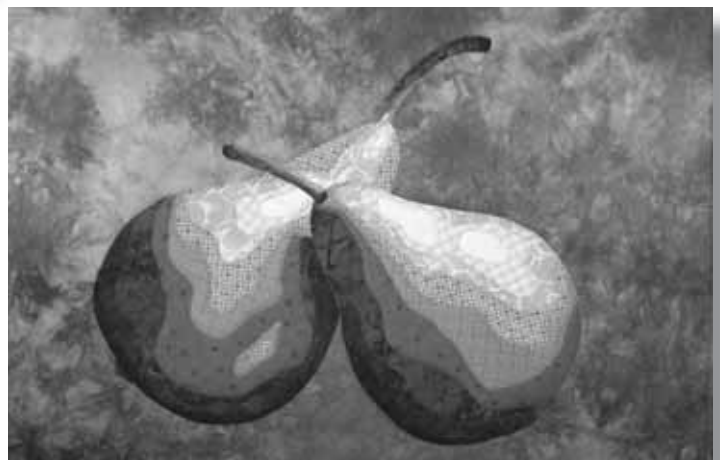
Times: 10:00 a.m. - 4:00 p.m.

Register by: August 10, 2009

Tuition: Members of Gualala Arts and PPQG: \$50

Members of Gualala Arts or PPQG: \$65 non-members: \$75

This class concentrates on using value to make simple objects appear realistically three-dimensional. Students will learn how to interpret a photograph as a nine-step value gradation and make it into a fused mini-quilt. There will be a demonstration on dividing a fabric stash into a nine-step value scale and another on fusing as an appliqué method.



A Special Workshop



More About
Frank Webb
A.W.S. (DF) N.W.S.

Going beyond the usual technical display of watercolor, Webb's paintings express his interest in the creative concept and design principles. He stresses the importance of seeing, feeling, and responding to possibilities while synthesizing realism with abstractionism. Webb covers a broad spectrum of subjects beyond traditional landscapes. His unusually sophisticated and idiosyncratic approach to watercolor is set forth in his three books: "Watercolor Energies," "Webb on Watercolor," and "Composition For The Painter." In these books he explores design, expression and the philosophy of art. He has also made five instructional DVDs.

Sixty years as a professional artist back up Webb's current activities in painting, lecturing, jurying and writing. As an invited instructor he has conducted hundreds of workshops in 50 states and throughout the world. In 2006 American Artist Magazine included Frank Webb in an article "20 Great Watercolor Teachers."

Typical Day:

A typical day begins with an hour and a half demo. Participants then paint their own subject with help as requested. One hour before the end of the day's session, a group critique will explore the faults and glories of each work.

Watercolor Energies and Composition

Instructor: Frank Webb

e-mail: Frankwebbaws@aol.com

When: Monday to Friday, September 21-25

Time: 9 - 5:00 pm

Tuition: Members \$495 Non-members \$545

* Early Bird Special with sign up by August 1

for members only \$445

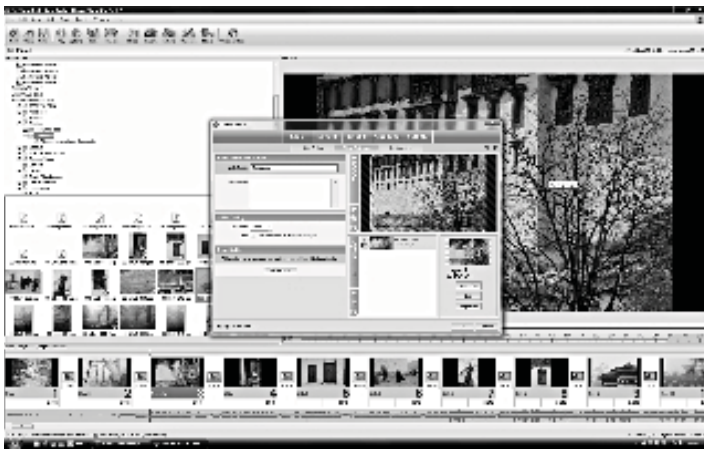
Register by: September 1 Materials List: Yes

Through demonstrations and lectures, Frank Webb, will clarify the use of design principles with the aim of re-creating a new reality, establishing unity, and producing unique works. Participants are encouraged to recognize and nurture their personal vision, sharpen their craft, and awaken a critical view of their own production becoming his/her own best teacher, critic, and audience. Demonstrations will explore a wide variety of approaches. All styles of painting and levels of expertise are welcome.



Among his more than 100 major awards are included the in the Arts and has earned Master Status with the National Transparent Watercolor Society. He is a vice president and dolphin fellow of the American Watercolor Society and holds memberships in several art associations including, the National Watercolor Society, Allied Artists of America, Audubon Artists, and the Rocky Mountain National Water Media Association. He is an honorary member of the Jiangsu (China) Watercolor Research Institute.

Webb has represented the American Watercolor Society in international exhibitions in Canada, New York, England, Scotland, Mexico City, and has been included in invitational exhibitions in China and Australia. He is listed in "Who's Who in American Art," and "Who's Who in the East." Collectors of Webb's art include: the Butler Institute of American Art, the Baylor Collection, the Tweed Art Museum of the University of Minnesota,



Telling a Story With Your Photos

Instructor: Steve Gadol

Saturday & Sunday

October 3 - 4, 2009

Time: 10:00 a.m. - 4:00 p.m.

Register by: September 10, 2009

Tuition: \$80 members, \$95 non-members per day
(Participants may take either or both days)

Materials list: Portable PC (MS Windows)

Participants should come to the workshop with knowledge of how to work with collections of digital images on their computer and how to do simple edition operations on the images. The first day will be an introduction of how to use slideshow creation software. The second day will be more advanced topics.



Hand Appliqué

Instructor: Gail Sims

Wednesday & Thursday

October 21 - 22, 2009

Time: 10:00 a.m. - 4:00 p.m.

Register by: September 18, 2009

Tuition: Members of Gualala Arts and PPQG: \$40

Members of Gualala Arts or PPQG: \$50 non-members: \$65

Materials list: Hand Appliqué supply list

Explore hand appliqué techniques in cotton and wool. Experiment with needle-turn, stencil appliqué and buttonhole methods. I will also cover ways make perfect circles and leaves. We will do a sample of each method and talk about all the tools which make appliqué fun.



No Rules - Painting With Texture

Instructors: Jane Head & Jan Fogel

Saturday & Sunday

October 24 - 25, 2009

Time: 10:00 a.m. - 4:00 p.m.

Register by: October 10, 2009

Tuition: \$95 members, \$105 non-members

Materials fee: \$50

Materials list: hair dryer, extension cord

The artists will demonstrate brushless painting techniques using common workshop tools or kitchen utensils. Processes will include using acrylic paints and other media, stencils, sponges, sandpaper, your own hand. No rules apply here and we'll give you lots of new avenues to approach painting on wood.

Introduction to Woodcarving

Instructors: Jim Tackett

Friday - Sunday

November 6 - 8, 2009

10:00 a.m. - 4:00 p.m.

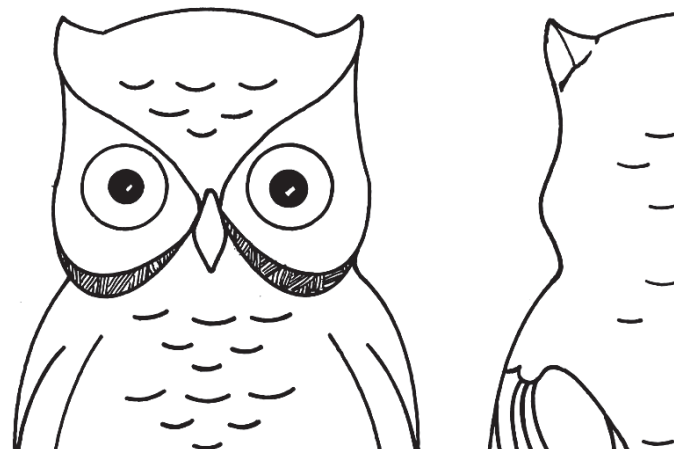
Register by: October 12, 2009

Tuition: \$120 members; \$150 non-members

Materials: Contact the instructor. (You may supply your own or instructor will provide them for \$75.)

Recommended: *The Beginner's Handbook of Woodcarving* by Charles Beiderman and William Johnston

The focus will be on hand carving using a knife and gouge, but power tools, wood burning, and finishing will be discussed.





Seascapes

Instructor: Marjan Kluepfel

Thursday, November 19, 2009

Time: 10:00 a.m. - 4:00 p.m.

Register by: October 12, 2009

Tuition: Members of Gualala Arts and PPQG: \$50

Members of Gualala Arts or PPQG: \$65 non-members: \$75

Materials fee: \$25

Create your own original seascape wall quilt. Learn about essential design principles. This workshop is suitable for new and experienced quilters with patterns available for those who are not confident to make their own designs.

Get Published: Independent Publishing and Self Publishing Today

Instructor: Lindsay Whiting

Phone: (707) 935-7001

E-mail: lindsay@paperlantern.biz

When: Saturday November 21, 2009

Time: 1:00 - 4:00 p.m.

Tuition: Members \$50 Non-members \$65

Register by: November 7, 2009

With the help of today's technology there are now more affordable ways than ever to publish your own book. The purpose of this Get Published seminar is to help attendees make informed decisions about their own publishing options,



Some of the fun times in workshops this last year . . .



Planning ahead . . . these workshops are being planned

January 16 & 23, Saturdays

Lini Liebermann-Erich

Women's Self-Defense / Available for registration now
This self-defense class is all about empowerment. The skills, tools and information presented will open your eyes.

January 23 -24

Carin Engen

Felting / Available for registration now
Learn or continue your learning of the felting process during this weekend workshop.

February 6

Lindsay Whiting

Collage / Available for registration now
Create successful and satisfying artwork with cut-magazine collage.

March 1 through April 12, Mondays

David Skibbins

Actor's Boot Camp / Available for registration now
See information below.

March 20

Iris Sandkuhler

Jewelry: Cold Clasp / Available for registration now
Techniques include forming, hammering, and twisting different metals together.

April 5 - 6

Suzi Long

Pastels / Available for registration now
Each day you'll see a demo and learn lots of tricks with a sprinkling of necessary rules.

April 14 - 15

PPQG / Check GualalaArts.org when available

May 21 - 22 - 23

Dale Laitinen

Watercolor / Available for registration now
The visual poetry of the landscape as discovered through the watercolor brush.

June 16 - 17

PPQG / Check GualalaArts.org when available

June 26-27

Susan Gross

Travel Sketchbooking / Check GualalaArts.org when available.

The perfect way to remember your travels.

September 17 - 18 - 19

Woody Hansen

Watercolor / Available for registration now
Better understand a simplified approach to color, line, shape and value.

September 15 - 16

PPQG / Check GualalaArts.org when available

October 2 - 3

PPQG / Check GualalaArts.org when available

October 2 - 3

Dale Doroshow

Polymer Clay / Available for registration now
The mystery of ancient cultures and far-away places will inspire this workshop.

November 18

PPQG / Check GualalaArts.org when available



Mondays, March 1 - April 12, 2010, 6:00 - 9:00 p.m.

Actor's Boot Camp

Instructor: David Skibbins

plus two 2-hour one-on-one coaching sessions

Register by: February 15, 2010

Tuition: \$125 members; \$150 non-members

Materials: Nothing, except commitment to attend entire seven weeks.

*This workshop is for experienced actors only who have already taken an introductory acting class and been in at least one play presented to the general public.

This seven week workshop is designed to take your acting skills to a new level.



Some of the fun times in workshops this last year . . .



Workshop Registration, Application Fee and Payment



Register at Gualala Arts Center,
46501 Gualala Road
Gualala, California
Monday through Friday, 9:00 a.m. to 4:00 p.m.
or call (707) 884-1138.
We accept Visa and Mastercard.

- Class must be paid in full at registration.
- Payments can be refunded until the "register by" date; after that date, no refunds.
- Classes are filled on a first come first served basis until all spaces are filled.
 - All classes are subject to minimum and maximum enrollment.
 - If the class does not fill, you will receive a full refund.
 - Please check that your class has filled before the first meeting date.
 - Please call if you need directions or information on lodging.

Visitor Information is also available at GualalaArts.org.

Please check GualalaArts.org for additional information.



If you would like to propose a workshop, please contact
Gerda Randolph, randolph@mcn.org.

All proposals are subject to
Workshop Committee and Executive Director approval.
Please download the guidelines, application form and
contract from GualalaArts.org for a:

- * Workshop on a specific date,
- * An on-going class, or
- * Culinary Guild workshop.



Call to Artists

at Gualala Arts Center

Registration forms for all these exhibits are available at GualalaArts.org or at the Gualala Arts office.
We encourage you to become a member of Gualala Arts and take advantage of the reduced entry fees.

<p>Exhibit Household Shrines Entry due September 28, 2009 Exhibit Oct. 10-Nov.8, 2009</p> <p>Join in our local Day of the Dead Festival and submit a proposal for a shrine representing a sacred space in your life. Proposals will be reviewed and appropriate interior or exterior space set aside. Shrines may be for sale.</p>	<p>Festival Festival of Trees Fri., November 27, 2009 Sat., November 28,2009</p> <ul style="list-style-type: none"> • Kringle's Craft Village Booths, due Sept. 1 • Gingerbread House Contest, due Nov.1 • Fantasy Tree Contest, due Nov. 1 	<p>Exhibit You Be the Judge January 9-31, <u>2010</u> The viewing public will have the opportunity to vote for their five favorites in this exhibit. Due December 29, <u>2009</u></p> 	<p>Exhibit May Show May 7-June 6, <u>2010</u> Juried exhibit with First prize of \$1000, Second prize of \$750 and third prize of \$500. Due February 1, <u>2010</u></p> 
--	--	---	---

<p>Audition Oliver! (Performances December 10 through 20) August 23, 1:00 p.m. ,August 24, 5:00 p.m. Prepared song is required for lead roles and coaching is available. Contact Lynne Atkins at 884-3838.</p>	<p>Singing/Speaking Roles (8 and over) Previous Experience Not Required.</p>
--	--

On-Going CLASSES

All classes are at Gualala Arts Center unless indicated otherwise.
Check out the GualalaArts.org website for more details.

NEW!

Martial Arts

Mondays, Wednesdays 6:00-7:30 pm
Starting September 7
\$60 Mon & Wed, \$45 Wed only
Lini Lieberman-Erich, 785-2288

Open Clay Studio

Mondays and Wednesdays
10:00 a.m. - 2:30 pm
Six Sessions \$100 / Single \$20 for members
Jan Maria Chiappa, 884-3825
Custom workshops available on request.

Piano Lessons

Tuesday and Wednesdays Time: 10-3:00 pm
Renata Yardumian, 884-9193

Drawing People

Instructor: Genny Wilson

Mondays
1:00-3:00 pm
Tuition: \$25 members
\$30 non-members
per session
Clothed Model to work from

Life Drawing

Wednesdays
3:00 p.m. - 6:00 pm
Model is provided, share fee
Tom Warnock, 785-3668



Aerobics

Mondays, Wednesdays, Fridays, Saturdays at
8:00 am
Debbie Langwell, 884-5021