

# A Special Workshop



Watercolor  
Energies and Composition

September 21 - 25

with instructor  
Frank Webb

Workshops make  
thoughtful gifts for holidays  
and birthdays!

Plus  
What's being planned  
for 2010 ....  
more are coming!



June through December

2009 Issue

# Workshops

and Call to Artist on back cover



# Gualala Arts

**Drawing – Basic to Advanced:  
Making Visual Your Ideas and Feelings**

**Instructor: Genny Wilson**

Phone: (707) 785-1025

e-mail: Hagginwilson@earthlink.net

When: Friday, Saturday, Sunday May 29, 30, 31

Time: 1 – 4:00 p.m.

Tuition: Members \$175 Non-members \$195

Register by: May 19

Materials List: Yes

Genny Wilson has been teaching drawing for many years and now is offering this workshop and on-going classes through Gualala Arts.

This class will be at Genny's home in Sea Ranch.

Check GualalaArts.org for directions or call the office.



**Jewelry Making with Precious Metal Clay**

**Instructor: Mary Neur Lee**

Phone: (707) 545-6825

When: Saturday, June 20, 2009

Time: 10 - 4:00 p.m.

Tuition: Members \$85 Non-Members \$95

Register by: June 4

Materials Fee: Approx. \$50 (depends on price of silver)

Precious Metal Clay (PMC) is a new and exciting medium that requires no jewelry or metalworking experience. It can be formed, carved, stamped, folded, and molded. It can even be set with stones! During this one-day workshop, you will be introduced to PMC as you create pendants, beads and earrings as well as learn finishing and coloring techniques. A tool kit will be provided for use during the workshop and may be purchased for an additional fee.



**Earth, Wind, Fire**

**Instructor: Rosalie Dace**

Tuesday - Thursday

June 2 - 4, 2009

Time: 10:00 a.m. - 4:00 p.m.

Register by: April 15, 2009

Tuition: Members of Gualala Arts and PPQG: \$125

Members of Gualala Arts or PPQG: \$145

Non-members: \$165

Emphasis in this class will be on color variation and choice, contrasts and subtlety, tonal value, texture and pattern. Invite the magic of Nature's colors into your quilts! Learning to work sensitively with color, contrasts and harmonies, you will do a series of small studies, followed by one or two larger color-rich abstract quilt tops.



**Watercolor Portraits**

**Instructor: Myrna Wacknov**

Phone: (650) 574-3192

When: Monday-Friday, June 22-26

Time: 9 - 4:00 pm

Tuition: Member \$350 Non-Member \$385

Register By: June 8

Materials List: Yes

In this workshop, you will learn the structure of the head and the placement of features, accurate drawing and transfer techniques, composition and value pattern. You will learn to design a painting rather than copy a photograph integrating background with foreground bringing color into the skin tones. Paintings will be created with 3 different ages: smooth and a face with "character" and a child or infant.



### **Building Expertise with Watercolor Pencil and Wax Pencil**

**Instructor: Bruce Jones**

Saturday - Sunday

July 25 - 26, 2009

Time: 10:00 a.m. - 4:00 p.m.

Register by: July 11, 2009

Tuition: \$65 members, \$75 non-members

Materials list: yes

This class will begin with an explanation of the materials used and a discussion of the elements of painting and composition including value, color, texture and line. Through demonstrations and hands-on practice, students will learn watercolor pencil and wax pencil techniques, color mixing, and mixing of media including watercolor, watercolor pencils, ink, pastels, etc.



### **Joy of Alla Prima:**

#### **Painting Landscapes in Nature**

**Instructors: Brigitte Curt & Jim Smyth**

Introduction meeting, Friday, August 28, 2009, 5:30 - 8:30 p.m.

Classes

Saturday - Monday

August 29 - 31, 2009

9:30 a.m. - 5:30 p.m.

Register by: August 19, 2009

Tuition: Friday plus 2 classes:

\$250 members, \$275 non-members

Friday plus 3 classes:

\$350 members, \$385 non-members

Materials list: Contact instructors

Prerequisites: You should have some practice in oil painting or whatever medium you choose.

More information at [GualalaArts.org](http://GualalaArts.org)



### **Creating Household Shrines**

**Instructors: Jan Maria Chiappa and Sharon Nickodem**

Introduction: Saturday September 5, 2009

Open workshops (your choice) Saturdays/Sundays

September 6, 12, 13, 19, 20, 26

Times: 1:00 - 4:00 p.m.

Register by: August 22, 2009

Tuition: \$50 members; \$65 non-members (for complete series)

Materials fee: Varies. Approx. \$10 - \$25 per session

Materials list: Household Shrines materials list

This series of workshops calls artists to create shrines and altars. These workshops are offered in anticipation of the Arts Center's celebration of "Day of the Dead" with its November 1 festival. The shrines created during this workshop may be shown at the Household Shrines - Sacred Spaces in Everyday Life exhibit running from October 10 through November 8.

### **The Value of Value**

**Instructor: Cathryn Zeleny**

Thursday, September 17, 2009

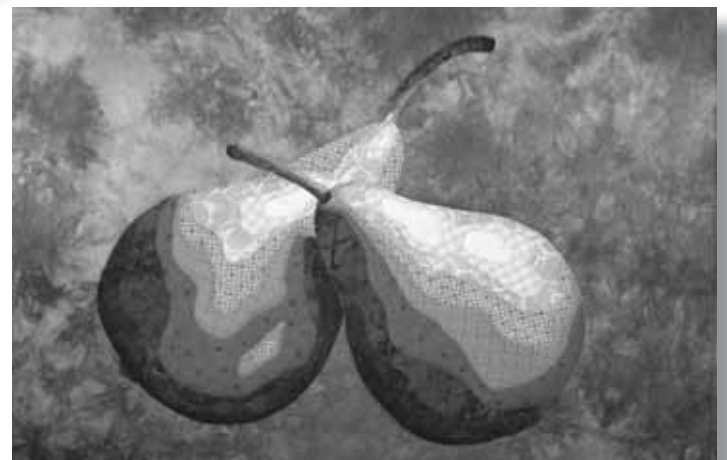
Times: 10:00 a.m. - 4:00 p.m.

Register by: August 10, 2009

Tuition: Members of Gualala Arts and PPQG: \$50

Members of Gualala Arts or PPQG: \$65 non-members: \$75

This class concentrates on using value to make simple objects appear realistically three-dimensional. Students will learn how to interpret a photograph as a nine-step value gradation and make it into a fused mini-quilt. There will be a demonstration on dividing a fabric stash into a nine-step value scale and another on fusing as an appliqué method.



# A Special Workshop . . .



More About  
Frank Webb  
A.W.S. (DF) N.W.S.

Going beyond the usual technical display of watercolor, Webb's paintings express his interest in the creative concept and design principles. He stresses the importance of seeing, feeling, and responding to possibilities while synthesizing realism with abstractionism. Webb covers a broad spectrum of subjects beyond traditional landscapes. His unusually sophisticated and idiosyncratic approach to watercolor is set forth in his three books: "Watercolor Energies," "Webb on Watercolor," and "Composition For The Painter." In these books he explores design, expression and the philosophy of art. He has also made five instructional DVDs.

Sixty years as a professional artist back up Webb's current activities in painting, lecturing, jurying and writing. As an invited instructor he has conducted hundreds of workshops in 50 states and throughout the world. In 2006 American Artist Magazine included Frank Webb in an article "20 Great Watercolor Teachers."

## *Typical Day:*

*A typical day begins with an hour and a half demo. Participants then paint their own subject with help as requested. One hour before the end of the day's session, a group critique will explore the faults and glories of each work.*

Watercolor Energies and Composition

Instructor: Frank Webb

e-mail: Frankwebbaws@aol.com

When: Monday to Friday, September 21-25

Time: 9 - 5:00 pm

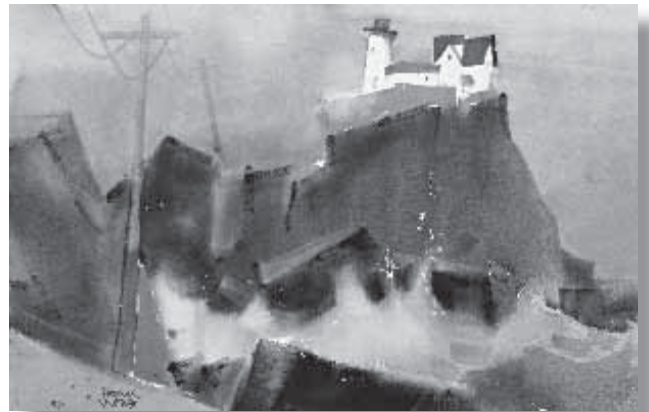
Tuition: Members \$495 Non-members \$545

\* Early Bird Special with sign up by August 1

for members only \$445

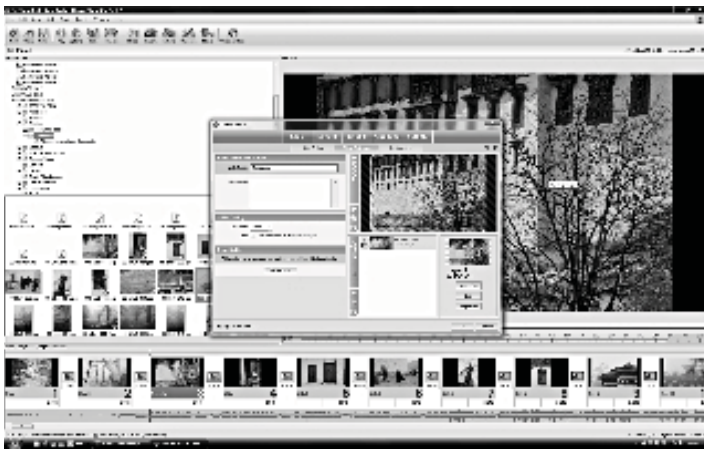
Register by: September 1 Materials List: Yes

Through demonstrations and lectures, Frank Webb, will clarify the use of design principles with the aim of re-creating a new reality, establishing unity, and producing unique works. Participants are encouraged to recognize and nurture their personal vision, sharpen their craft, and awaken a critical view of their own production becoming his/her own best teacher, critic, and audience. Demonstrations will explore a wide variety of approaches. All styles of painting and levels of expertise are welcome.



Among his more than 100 major awards are included the in the Arts and has earned Master Status with the National Transparent Watercolor Society. He is a vice president and dolphin fellow of the American Watercolor Society and holds memberships in several art associations including, the National Watercolor Society, Allied Artists of America, Audubon Artists, and the Rocky Mountain National Water Media Association. He is an honorary member of the Jiangsu (China) Watercolor Research Institute.

Webb has represented the American Watercolor Society in international exhibitions in Canada, New York, England, Scotland, Mexico City, and has been included in invitational exhibitions in China and Australia. He is listed in "Who's Who in American Art," and "Who's Who in the East." Collectors of Webb's art include: the Butler Institute of American Art, the Baylor Collection, the Tweed Art Museum of the University of Minnesota,



### Telling a Story With Your Photos

**Instructor: Steve Gadol**

Saturday & Sunday

October 3 - 4, 2009

Time: 10:00 a.m. - 4:00 p.m.

Register by: September 10, 2009

Tuition: \$80 members, \$95 non-members per day  
(Participants may take either or both days)

Materials list: Portable PC (MS Windows)

Participants should come to the workshop with knowledge of how to work with collections of digital images on their computer and how to do simple edition operations on the images. The first day will be an introduction of how to use slideshow creation software. The second day will be more advanced topics.



### Hand Appliqué

**Instructor: Gail Sims**

Wednesday & Thursday

October 21 - 22, 2009

Time: 10:00 a.m. - 4:00 p.m.

Register by: September 18, 2009

Tuition: Members of Gualala Arts and PPQG: \$40

Members of Gualala Arts or PPQG: \$50 non-members: \$65

Materials list: Hand Appliqué supply list

Explore hand appliqué techniques in cotton and wool. Experiment with needle-turn, stencil appliqué and buttonhole methods. I will also cover ways make perfect circles and leaves. We will do a sample of each method and talk about all the tools which make appliqué fun.



### No Rules - Painting With Texture

**Instructors: Jane Head & Jan Fogel**

Saturday & Sunday

October 24 - 25, 2009

Time: 10:00 a.m. - 4:00 p.m.

Register by: October 10, 2009

Tuition: \$95 members, \$105 non-members

Materials fee: \$50

Materials list: hair dryer, extension cord

The artists will demonstrate brushless painting techniques using common workshop tools or kitchen utensils. Processes will include using acrylic paints and other media, stencils, sponges, sandpaper, your own hand. No rules apply here and we'll give you lots of new avenues to approach painting on wood.

### Introduction to Woodcarving

**Instructors: Jim Tackett**

Friday - Sunday

November 6 - 8, 2009

10:00 a.m. - 4:00 p.m.

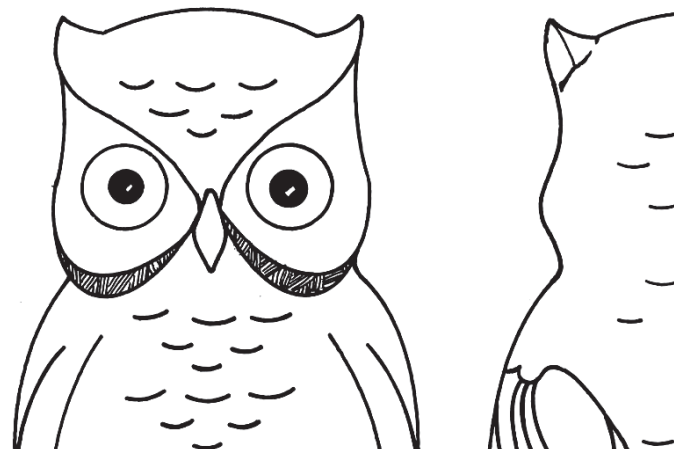
Register by: October 12, 2009

Tuition: \$120 members; \$150 non-members

Materials: Contact the instructor. (You may supply your own or instructor will provide them for \$75.)

Recommended: *The Beginner's Handbook of Woodcarving* by Charles Beiderman and William Johnston

The focus will be on hand carving using a knife and gouge, but power tools, wood burning, and finishing will be discussed.





### **Seascapes**

**Instructor: Marjan Kluepfel**

Thursday, November 19, 2009

Time: 10:00 a.m. - 4:00 p.m.

Register by: October 12, 2009

Tuition: Members of Gualala Arts and PPQG: \$50

Members of Gualala Arts or PPQG: \$65 non-members: \$75

Materials fee: \$25

Create your own original seascape wall quilt. Learn about essential design principles. This workshop is suitable for new and experienced quilters with patterns available for those who are not confident to make their own designs.

### **Get Published: Independent Publishing and Self Publishing Today**

**Instructor: Lindsay Whiting**

Phone: (707) 935-7001

E-mail: [lindsay@paperlantern.biz](mailto:lindsay@paperlantern.biz)

When: Saturday November 21, 2009

Time: 1:00 - 4:00 p.m.

Tuition: Members \$50 Non-members \$65

Register by: November 7, 2009

With the help of today's technology there are now more affordable ways than ever to publish your own book. The purpose of this Get Published seminar is to help attendees make informed decisions about their own publishing options,



## **Planning ahead . . . these workshops are being planned**

**January 23 -24**

Carin Engen

Felting / Check [GualalaArts.org](http://GualalaArts.org)

**February 6**

Lindsay Whiting

Collage / Available for registration now

**April 5 - 6**

Suzi Long

Pastels / Check [GualalaArts.org](http://GualalaArts.org)

**April 14 - 15**

PPQG / Check [GualalaArts.org](http://GualalaArts.org)

**May 21 - 22 - 23**

Dale Laitinen

Watercolor / Available for registration now

**June 16 - 17**

PPQG / Check [GualalaArts.org](http://GualalaArts.org)

**June 19**

Susan Gross

Bookmaking / Check [GualalaArts.org](http://GualalaArts.org)

**September 15 - 16**

PPQG / Check [GualalaArts.org](http://GualalaArts.org)

**September 17 - 18 - 19**

Woody Hansen

Watercolor / Check [GualalaArts.org](http://GualalaArts.org)

**October 2 - 3**

PPQG / Check [GualalaArts.org](http://GualalaArts.org)

**October 2 - 3**

Dale Doroshov

Polymer Clay / Available for registration now

**November 18**

PPQG / Check [GualalaArts.org](http://GualalaArts.org)

# Workshop Registration, Application Fee and Payment



Register at Gualala Arts Center,  
46501 Gualala Road  
Gualala, California  
Monday through Friday, 9:00 a.m. to 4:00 p.m.  
or call (707) 884-1138.  
We accept Visa and Mastercard.

- Class must be paid in full at registration.
- Classes are filled on a first come first served basis until all spaces are filled.
  - All classes are subject to minimum and maximum enrollment.
    - If the class does not fill, you will receive a full refund.
  - Please check that your class has filled before the first meeting date.

Please call if you need directions or information on lodging.  
Visitor Information is also available at [GualalaArts.org](http://GualalaArts.org).  
Please check [GualalaArts.org](http://GualalaArts.org) for additional information.

## On-Going CLASSES

All classes are at Gualala Arts Center unless indicated otherwise.  
Check out the [GualalaArts.org](http://GualalaArts.org) website for more details.

### Open Clay Studio

Mondays and Wednesdays  
10:00 a.m. - 2:30 pm  
Six Sessions \$100 / Single \$20 for members  
Jan Maria Chiappa, 884-3825  
Custom workshops available on request.

### Piano Lessons

Tuesday and Wednesdays Time: 10~ 3:00 pm  
Renata Yardumian, 884-9193

### Aerobics

Mondays, Wednesdays, Fridays, Saturdays at  
8:00 am  
Debbie Langwell, 884-5021

### New !

#### Drawing People

Instructor: Genny Wilson

Mondays  
1:00 - 3:00 pm  
Tuition: \$25 members  
\$30 non-members  
per session  
Clothed Model to  
work from

#### Life Drawing

Wednesdays  
3:00 p.m. - 6:00 pm  
Model is provided, share fee  
Tom Warnock, 785-3668



If you would like to propose a workshop, please contact  
Gerda Randolph, [randolph@mcn.org](mailto:randolph@mcn.org).

All proposals are subject to  
Workshop Committee and Executive Director approval.  
Please download the guidelines, application form and  
contract from [GualalaArts.org](http://GualalaArts.org) for a:

- \* Workshop on a specific date,
- \* An on-going class, or
- \* Culinary Guild workshop.



# Call to Artists

## at Gualala Arts Center for 2009

**Warps & Wefts**  
Entry due July 1  
Exhibit Sept. 12~Oct. 7

This exhibit open to all fiber enthusiasts. The exhibit will be juried and only works created by the interlacing of warp and weft will be accepted.

*interlacing lengthwise materials with crosswise materials*

**Auto Show**  
Entry due ASAP  
Exhibit Saturday, July 18

Call Jim Grenwelge at 785-9317 if you would like to be considered for this CAR / MOTORCYCLE exhibit.




**Household Shrines**  
Entry due September 28  
Exhibit Oct. 10~Nov.8

Join in our local Day of the Dead festival and submit a proposal for a shrine representing a sacred space in your life. Proposals will be reviewed and appropriate interior or exterior space set aside.

Shrines may be for sale.

**Registration forms for all these exhibits are available at [GualalaArts.org](http://GualalaArts.org) or at the Gualala Arts office.**

*We encourage you to become a member of Gualala Arts and take advantage of the reduced entrance fees.*



**art** in the  
**redwoods**

Only the first 420 entries accepted !

Download the Registration Form or  
Pick up at the Gualala Arts office