

CALL TO ARTISTS

Get all the details and entry forms online at GualalaArts.org or at the Gualala Arts office.

☞ Registration closes June 25 ☞

Summer Art Program for Youth

Now is the last chance to sign up for Gualala Arts' Summer Art Program for Youth ages 3 through 13. The dates of the summer school will be Monday through Thursday, July 9 through 12 and 16 through 19 from 9:30 a.m. to 12:30



p.m. The cost is \$150 per child.

This program has been extremely popular in the past 16 years. Preschoolers will receive a three-hour Art and Physical Education program. Students in grades 1 through 6 are offered a choice of two consecutive classes of 1 1/2 hours each. Classes will be given in Ceramics, Drama, Creative Arts & Crafts, Irish Dance, Culinary Art, Drawing, Painting & Sculpture.

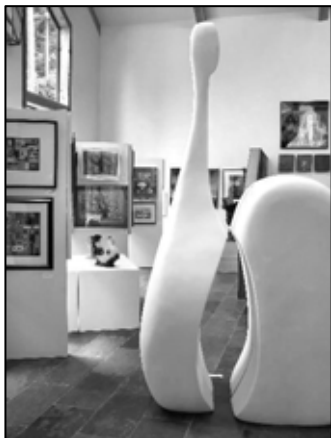
Gualala Arts Center is located at 46501 Gualala Road in Gualala. You can call (707) 884-1138 for more information.

Booths for Summer Saturday Art Fests

If you are an artist interested in selling your work in a booth on the Saturdays July 7 and October 6, in downtown Gualala by the Gualala Hotel, be sure to get your application in as early as possible. Here is your chance to sell any art (except jewelry – the category is filled) in a friendly, fair-like atmosphere in the center of the shopping district to visitors and locals.

Fine Art Exhibit at Art in the Redwoods

A new idea and incentive for entering the Fine Art Exhibit at Art in the Redwood is the calendar Gualala Arts will publish and market in 2008. The First Place winners in each category will have their work featured on a monthly page. The Best of Show winner will be on the cover.



Applications to be in this show of shows on the Redwood Coast are now available online at GualalaArts.org or at the office. Remember only the first 420 applications will be accepted, so send in yours today. Only two entries per artist are permitted. Read all the rules because there have been some changes.

☞ Proposals due Thursday, May 31 ☞

Artists Using Experimental Or Alternative Photographic Methods

The exhibit challenges photographers to explore experimental, non-traditional techniques such as alternatives to the straight black and white or color process, use of mixed media, application of photographs to non-traditional surfaces, or inclusion of images in three dimensional sculpture or collages. This will NOT be your ordinary photo show! This show is open to professional and amateur artists who wish to create art using experimental or alternative photographic methods. This exhibit is open to all subject matter, including adult subjects. Sharon Nickodem and Marion Patterson will curate this exhibit.

Important Dates:

- Proposals must be turned into Gualala Arts office no later than Thursday, May 31.
- Artists will be notified no later than 5 p.m. Friday, June 15, whether or not their proposal has been accepted.
- Deliver pieces (with \$10 registration fee for members; \$20 fee for non-members) to the arts center on Wednesday, December 5 between 10 a.m. – 2 p.m.
- Pieces that are not accepted for the show should be picked up December 6 & 7 during normal office hours.
- Exhibit Opening and Reception is Saturday, December 8, from 5 – 7 p.m.
- Pick up unsold pieces Monday, January 7, 2008, between 10 a.m. – 2 p.m.

Festival of Trees

The Festival of Trees Steering Committee is extending an invitation to hand-crafters/artists to apply for booth space in this year's exciting event, scheduled for Wednesday, November 21 (Invitational-only Sponsors Preview Gala), Friday the 23rd and Saturday the 24th. The Festival of Trees is a major Gualala Arts fundraising event which features several Holiday-oriented venues, including a forest of decorated Christmas trees and a lane of gingerbread houses for silent auction, seasonal workshops, special children's activities, live entertainment, food and beverages. In the Kringle's Craft Village, artisans offer their wares for sale and are encouraged to offer demonstrations of their craft. The items selected for this event will be based on crafts that existed during the mid-1800s, when Gualala was a mill town. Period-style crafts would include wood carving, candle making, leather work, pottery, basketry, fiber crafts and needlework, beadwork, glass making, metal work, soap making, jewelry, toys and ornaments, etc. All crafts must be handmade, original artwork. No buy-sell crafts! The Gualala Arts' guilds are encouraged to apply, as well as individual artisans. As there are a limited number of booth spaces, the show will be juried. **To be considered, applications must be turned in no later than August 1st.**